



aquanatass



Water from the embodiment of perfection.

## Technical Information

---

- Height: 195 cm
  - Width: 24 cm
  - Depth: 22 cm
  - Weight: 25 kg
- 
- Base installation depth is minimum 8 cm + floor surfacing (tile/natural stone)
- 
- Minimum incoming water pressure: 3 bar
- 
- Minimum suggested ceiling height: 310 cm
- 
- Base includes:
    - 2 DN 40 drain fittings
    - 3 1/2" AG fittings for water temperature blending

The patented design causes water to fall like a soft summer shower upon the skin.

- Material:  
wood, bronze, aluminum.



We recommend fittings:  
Hansgrohe, Dornbracht, Vola

310 cm

22 cm

## Dimensions

24 cm

195 cm

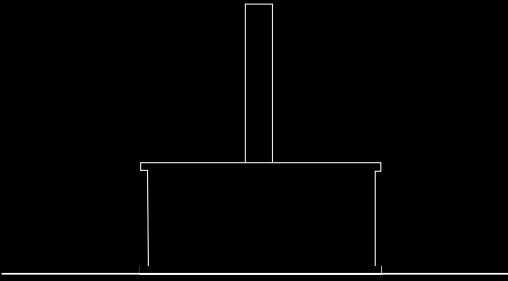
14 cm

8 cm

Reproduction or transfer of this drawing and technical information to a third party or competitor is strictly prohibited without the prior written permission of Aquanatass. The user of the information and technical drawings provided herein assumes all risk and accepts the full exclusion of Aquanatass from all liability. Dimensional information is provided without liability for accuracy. Aquanatass reserves the right to make design and technical changes.

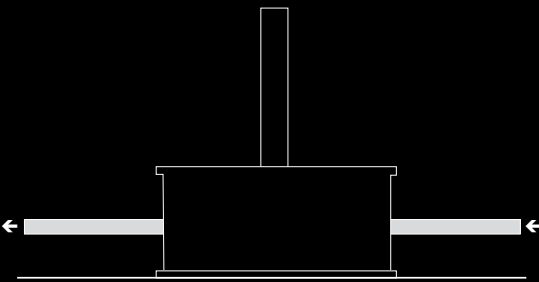
1. Place the base on its installation site

---



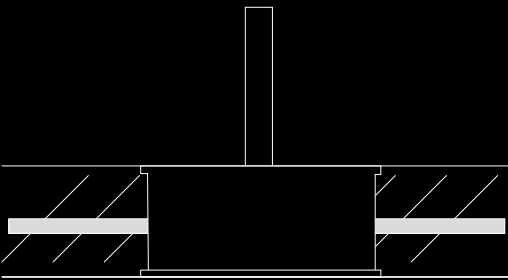
2. Connect the water and drain lines

---



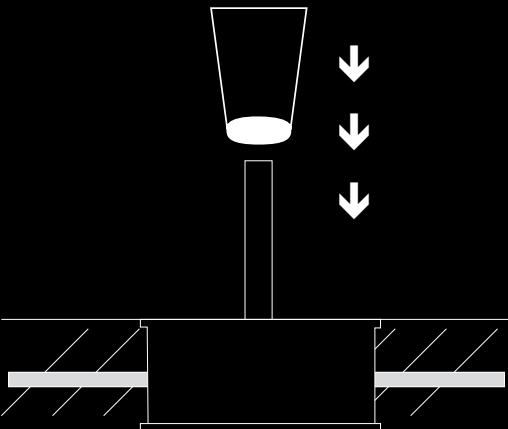
3. Install the floor

---



4. Assemble the sculpture

---



The shower sculpture. **aquanatass.**  
Water from the embodiment of perfection.